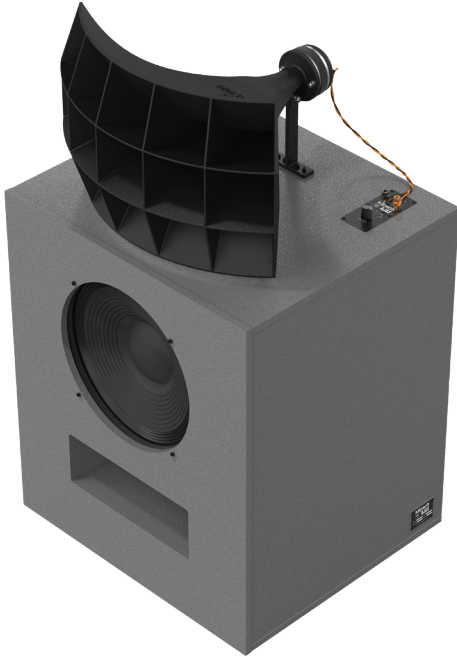
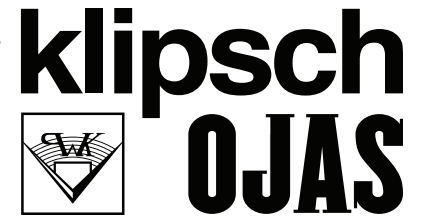


k0-R2

2-WAY MULTISECTORAL LOUDSPEAKER



LIMITED EDITION

The Klipsch + OJAS k0-R2 is a strictly limited edition. The unparalleled uniqueness of this product and the innovative collaboration between Klipsch and OJAS have generated demand that exceeds our inventory. Secure your piece of audio history today, before they vanish into history.

LEGENDARY PEDIGREE

Handcrafted in Hope, Arkansas, USA by skilled Klipsch artisans, the k0-R2 exemplifies nearly a century of speaker-building expertise, delivering a meticulously built loudspeaker of unparalleled quality.

BUILT TO STUN

The k0-R2 epitomizes OJAS's visionary design philosophy, incorporating bespoke materials such as an exposed sandcast aluminum multisectoral horn and Baltic birch plywood with full butt joint construction. Available in spiral red oak veneer or hammertone finishes with a matte black horn.

TECH DELIGHTERS

Embodying a minimalist ethos, the k0-R2 features bespoke materials and cutting-edge components, anodized aluminum binding posts, and anti-vibration rubber feet. A laser-engraved metal ID plate adds a touch of exclusivity, while a five-step high-frequency gain attenuator provides precise sound tuning.

SPECIFICATIONS

FREQUENCY RESPONSE ¹	39 Hz - 20kHz +/- 3dB
FREQUENCY RESPONSE (f10) ¹	29 Hz - 21kHz -10dB
POWER HANDLING ²	300W (34.6V) 40 Hz - 10kHz
CALCULATED MAX. CONTINUOUS OUTPUT ³	118db 40 Hz - 10kHz
SENSITIVITY ⁴	97 db @ 2.83V
CROSSOVER POINT	760 Hz
HORIZONTAL COVERAGE PATTERN	90 degrees, +/- 30 degrees, 500Hz to 20kHz
VERTICAL COVERAGE PATTERN	70 degrees, +/- 20 degrees, 3kHz to 20kHz
NOMINAL IMPEDANCE	8 ohm (4.2 ohm min. @ 100 Hz)
TRANSDUCERS	K-33-E 15" Woofer; K-706 HF Driver
ENCLOSURE ⁵	vented system
ENCLOSURE MATERIAL	13-ply Grade A Baltic Birch Plywood
TERMINALS	5 way binding posts
DIMENSIONS	25.375" (64.45cm) W x 45.5" (115.5cm) H x 22.25" (56.5cm) D
NET WEIGHT	120.5 lbs. (54.65kg)
SHIPPING WEIGHT	134 lbs (60.78kg)

¹ 3M, Half-space anechoic

² AES standard, continuous pink noise, 6dB peaks

³ Calculated at 1M half-spaced at power handling power input

⁴ SPL at 1M, half-spaced anechoic with 2.83 volts input

FINISH TYPE SKU

KO-R2 RED OAK	1080319
KO-R2 HAMMERTONE	1080453