

Klipsch®

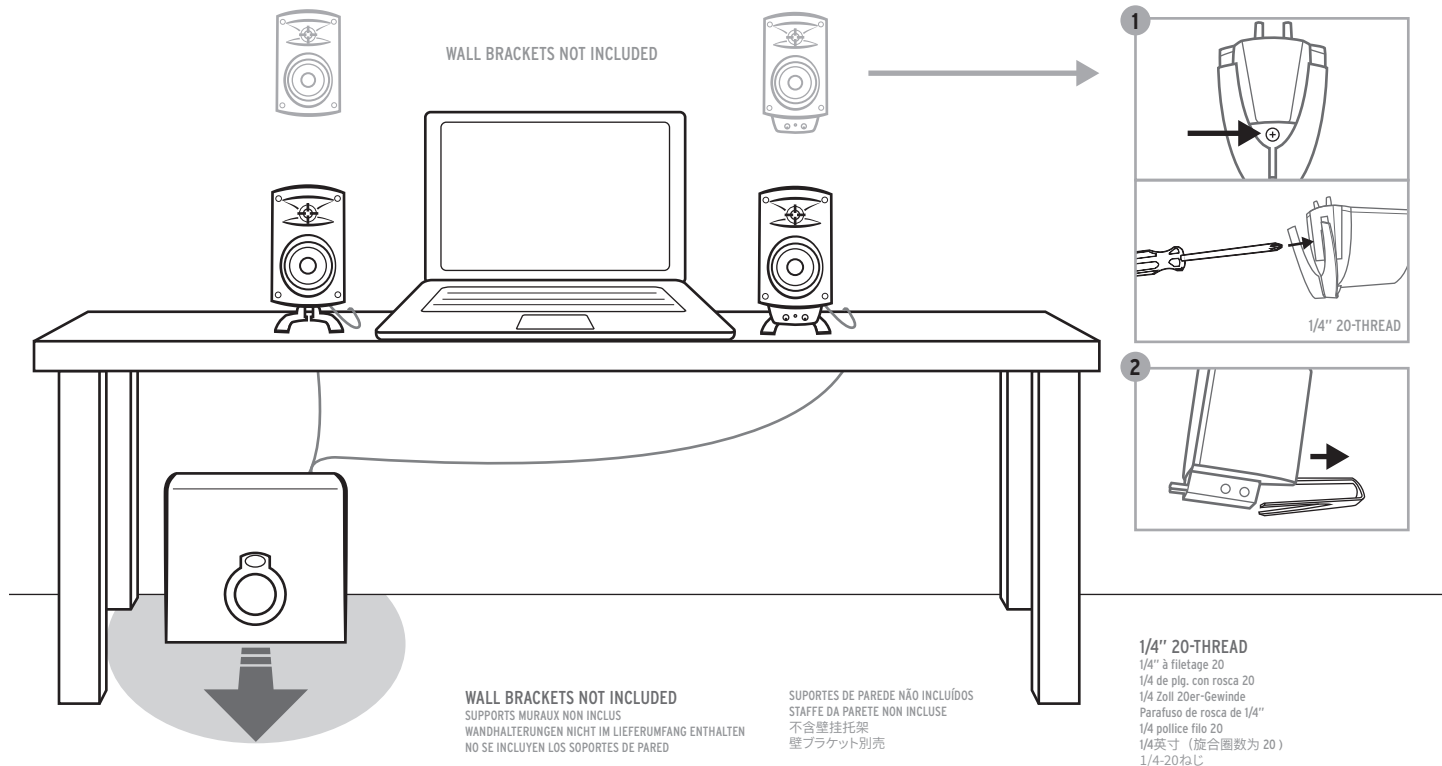
ProMedia 2.1

Owner's Manual



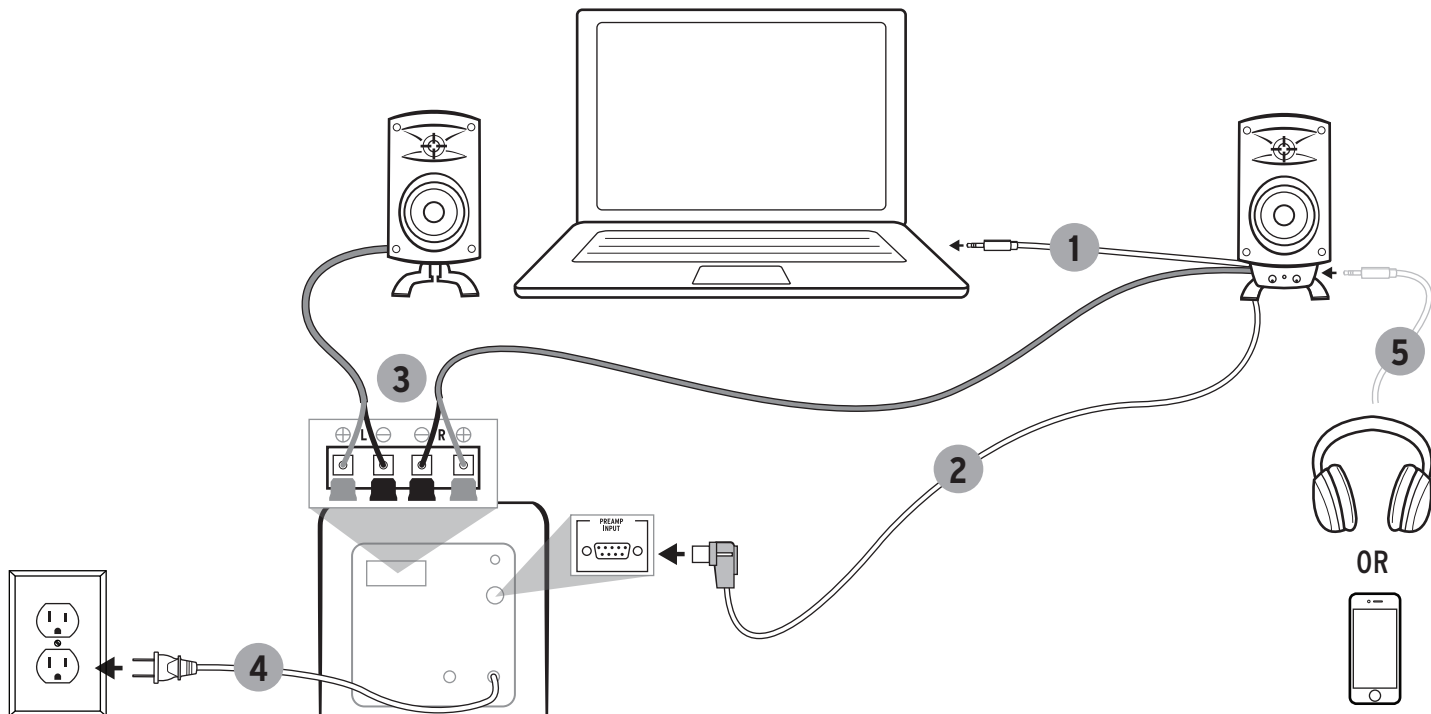
SPEAKER PLACEMENT

PLACEMENT DES ENCEINTES COLOCACIÓN DE LOS ALTAVOCES LAUTSPRECHERPLATZIERUNG POSICIONAMENTO DAS CAIXAS ACÚSTICAS COLLOCAZIONE DEGLI ALTOPARLANTI 扬声器放置 スピーカーの配置



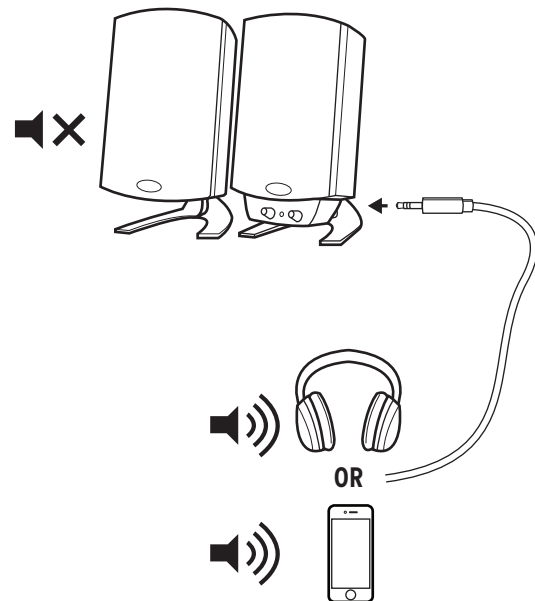
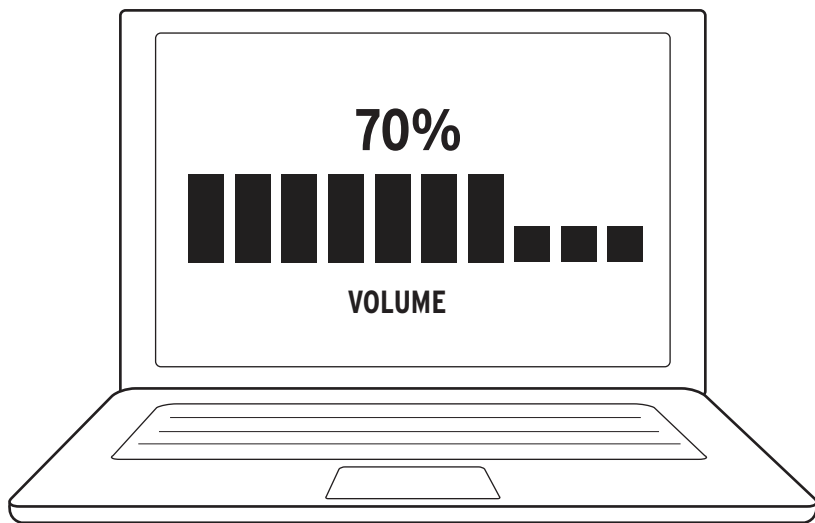
SPEAKER CONNECTION

RACCORDAMENT DES ENCEINTES CONEXIÓN DE ALTAVOCES LAUTSPRECHERANSCHLUSSDIAGRAMM CONEXÃO DAS CAIXAS ACÚSTICAS COLLEGAMENTO DEGLI ALTOPARLANTI 扬声器连接图解 スピーカー接続



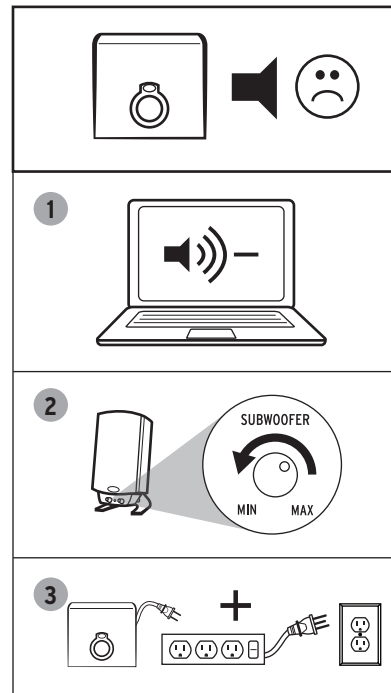
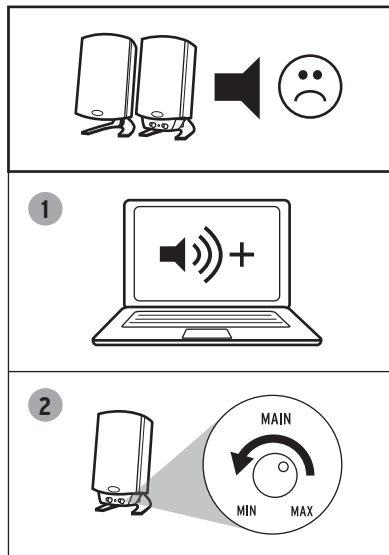
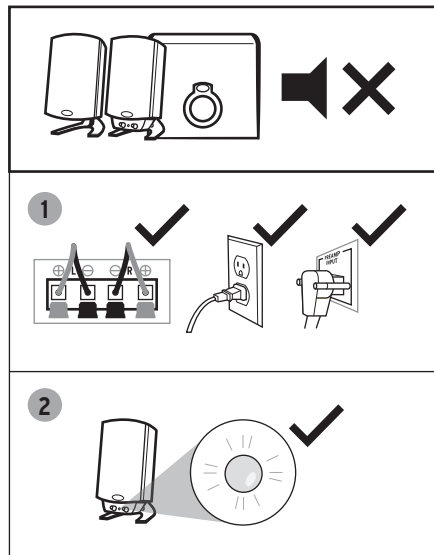
VOLUME

VOLUMEN 量 音量



TROUBLESHOOTING

RÉSOLUTION DES PROBLÈMES SOLUCIÓN DE PROBLEMAS PROBLEMLÖSUNG SOLUÇÃO DE PROBLEMAS SOLUZIONE DEI PROBLEMI 故障排除 トラブルシューティング





Klipsch[®]

KEEPERS OF THE SOUND[®]

3502 Woodview Trace, Indianapolis, IN, USA
KLIPSCH.COM

1-800-KLIPSCH ©2014 Klipsch Group, Inc. All right reserved. Klipsch and Keepers of the Sound are registered trademarks of Klipsch Group, Inc. in the USA and other countries.
A wholly-owned subsidiary of Vox International Corporation

V06 - 210628