

Klipsch®

ProMedia 2.1

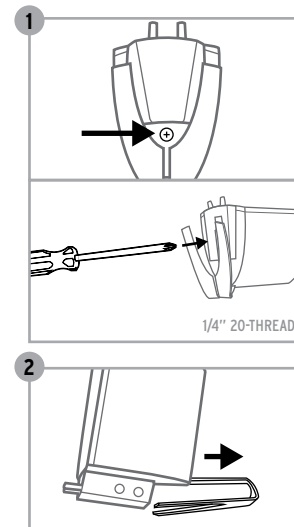
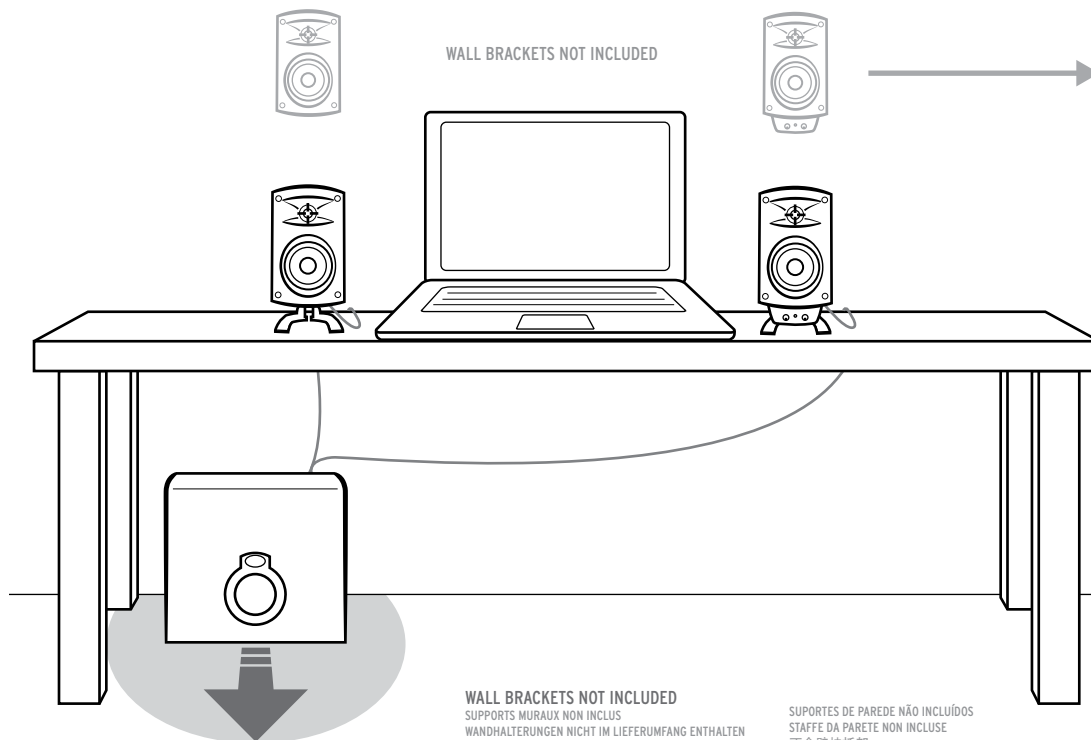
 Bluetooth®

Owner's Manual



SPEAKER PLACEMENT

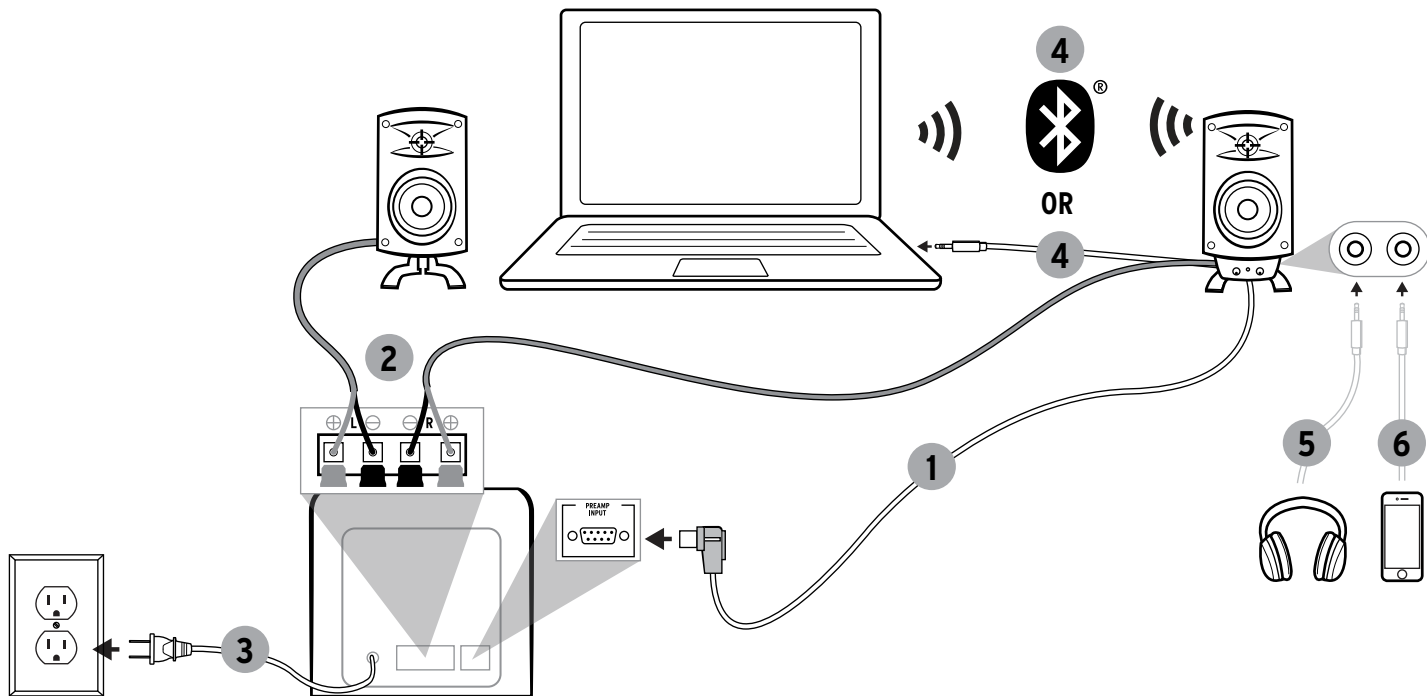
PLACEMENT DES ENCEINTES COLOCACIÓN DE LOS ALTAVOCES LAUTSPRECHERPLATZIERUNG POSICIONAMENTO DAS CAIXAS ACÚSTICAS COLLOCAZIONE DEGLI ALTOPARLANTI 扬声器放置



1/4" 20-THREAD
1/4" à filetage 20
1/4 de plg. con rosca 20
1/4 Zoll 20er-Gewinde
Parafuso de rosca de 1/4"
1/4 pollice filo 20
1/4英寸 (旋合圈数为20)

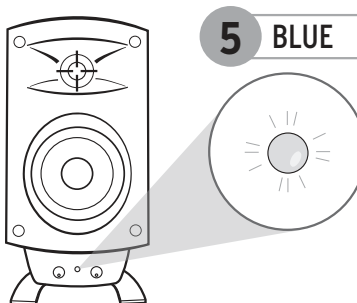
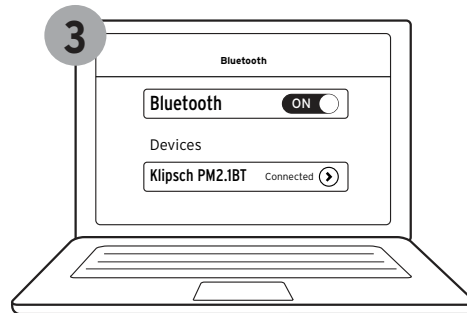
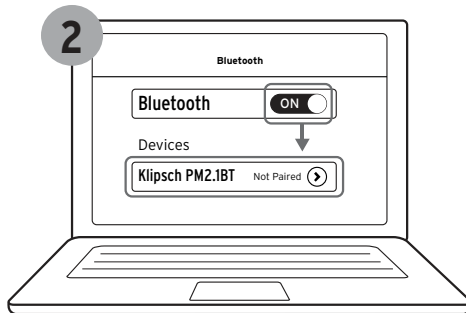
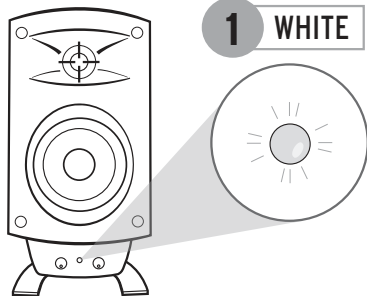
SPEAKER CONNECTION

RACCORDMENT DES ENCEINTES CONEXIÓN DE ALTAVOCES LAUTSPRECHERANSCHLUSSDIAGRAMM CONEXÃO DAS CAIXAS ACÚSTICAS COLLEGAMENTO DEGLI ALTOPARLANTI 扬声器连接图解



BLUETOOTH® WIRELESS TECHNOLOGY

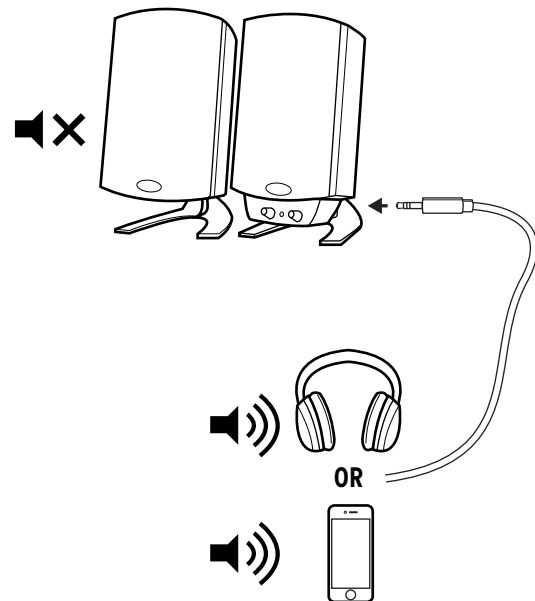
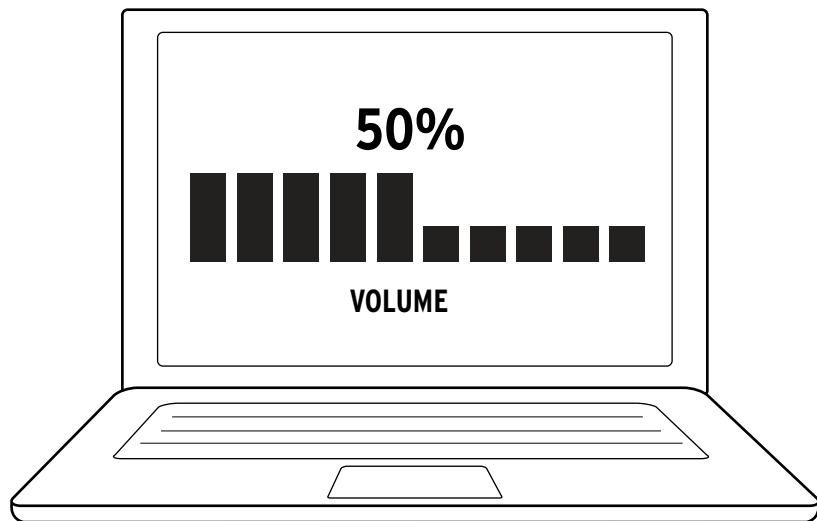
TECNOLOGÍA INALÁMBRICA **BLUETOOTH®** CONFIGURACIÓN DE TECNOLOGÍA WIRELESS **BLUETOOTH®** DRAHTLOSE **BLUETOOTH®**-TECHNOLOGIE-SETUP CONFIGURAZIONE TECNOLOGIA WIRELESS **BLUETOOTH®**
CONFIGURAÇÃO DE TECNOLOGIA SEM FIO **BLUETOOTH®** **BLUETOOTH®** 蓝牙无线电技术



WHITE	BLUE
BLANC	BLEU
BLANCO	AZUL
WEISS	AZAU
BIANCO	BLU
BRANCO	AZUL
白色	蓝色

VOLUME

VOLUMEN 量



For more in-depth information and troubleshooting instructions visit [KLIPSCH.COM/promedia](https://klipsch.com/promedia)

Pour plus d'informations et des instructions de dépannage détaillées, consultez [Klipsch.com/promedia](https://klipsch.com/promedia)

Hay información más detallada e instrucciones de detección y reparación de averías en [Klipsch.com/promedia](https://klipsch.com/promedia)

Detailliertere Anweisungen und Hinweise zur Problembhebung finden Sie unter [Klipsch.com/promedia](https://klipsch.com/promedia)

Per informazioni più dettagliate e istruzioni per la soluzione dei problemi, visitare [Klipsch.com/promedia](https://klipsch.com/promedia)

Para obter informações mais detalhadas e instruções para solucionar problemas, visite o site [Klipsch.com/promedia](https://klipsch.com/promedia)

欲了解更详细的信息和故障排除说明，请访问 [Klipsch.com/promedia](https://klipsch.com/promedia)。



Klipsch[®]

KEEPERS OF THE SOUND

3502 Woodview Trace, Indianapolis, IN, USA
KLIPSCH.COM

1-800-KLIPSCH ©2016 Klipsch Group, Inc. All rights reserved. Klipsch and Keepers of the Sound are registered trademarks of Klipsch Group, Inc. in the USA and other countries.
A wholly-owned subsidiary of Vox International Corporation.
The Bluetooth[®] word mark is a registered trademark owned by Bluetooth SIG, Inc. and any use of such mark by Klipsch Group, Inc. is under license.

