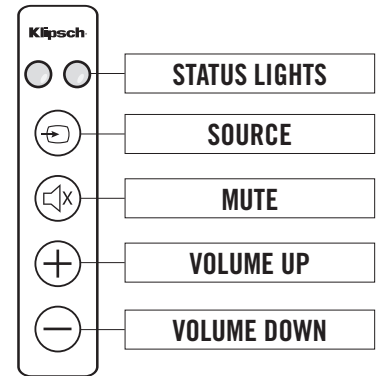


Quick Setup Guide - Programming The KLIPSCH ICON™ SB 1 To Your TV Remote

The KLIPSCH ICON™ SB 1 soundbar has four control buttons under the status indicator lights on its front panel. From the top button down, they are SOURCE, MUTE, VOLUME UP, and VOLUME DOWN. MUTE, VOLUME UP, AND VOLUME DOWN can easily be programmed to your TV, Satellite or Cable box remote control so that you can use that remote to control these functions.

NOTE: The KLIPSCH ICON™ SB 1 model comes with its own remote and controls not only the four control buttons but has a separate button for the 3D Surround Mode On/Off feature. MUTE, VOLUME UP, AND VOLUME DOWN can be programmed into other remote controls using the built-in Learning Remote feature, but the 3D Surround mode On/Off button cannot be learned by any other remote and must be controlled with the included remote.



IMPORTANT NOTE: There is not a power on/off button on the front of the soundbar (there is a Main Power switch on the soundbar's rear panel). You do not need to turn off the soundbar (or subwoofer) when finished watching TV. When finished, turn off your TV (or Satellite or Cable box if the soundbar is connected to that). The soundbar (and the subwoofer) will automatically go into a Standby or "sleep" mode if they do not receive an audio signal from your TV, Satellite or Cable Box for approximately 10 minutes. Standby mode is indicated by a solid red status light on the soundbar front and on the subwoofer rear panel. When your TV, Satellite or Cable box is turned back on and a signal is again received, the soundbar (and subwoofer) will automatically come out of Standby mode and turn on.

Easy, Three-Step Remote Programming

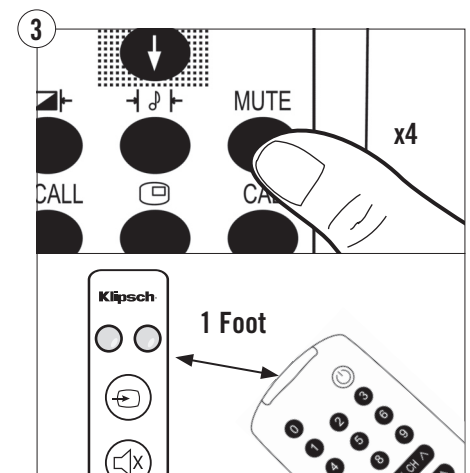
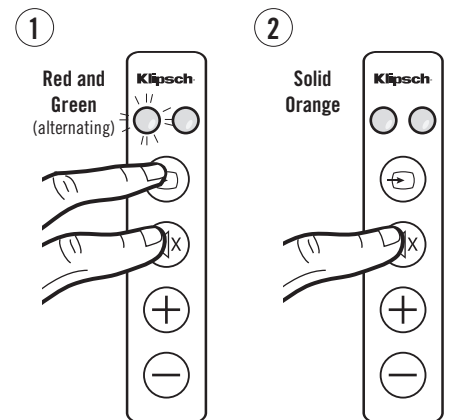
The following 3 steps should be used to program each function of your TV or cable box remote control buttons (MUTE, VOLUME UP, and VOLUME DOWN). **IF THE SOUNDBAR IS IN STANDBY MODE** (solid RED status light), push the <SOURCE> button on the soundbar until the status light is solid GREEN.

STEP ONE (Place the unit in learning mode): With the status light showing solid GREEN, press and hold the <SOURCE> and <MUTE> buttons on the front of the soundbar at the same time (approximately 3 seconds) until the status light flashes RED and GREEN.

STEP TWO (Select the function to learn): Press the <MUTE> button once on the soundbar (the status light changes to solid ORANGE). (Substitute the VOLUME UP, and VOLUME DOWN in place of <MUTE> when programming the other buttons during this step)

STEP THREE (Learn the function): Hold your remote control within one foot and pointed at the front of the soundbar. Slowly press the <MUTE> button on your remote control four times. On the first three presses, the status indicator light will flicker ORANGE with each press. If the unit has successfully learned the function, on the fourth press of the button, the light will flash GREEN several times and then turn to solid GREEN. (Remember to use the VOLUME UP, and VOLUME DOWN in place of <MUTE> when programming the other buttons during this step)

To program the remaining functions, simply repeat all steps, substituting <MUTE> with the new function and button presses (VOLUME UP, and VOLUME DOWN) on steps TWO and THREE.

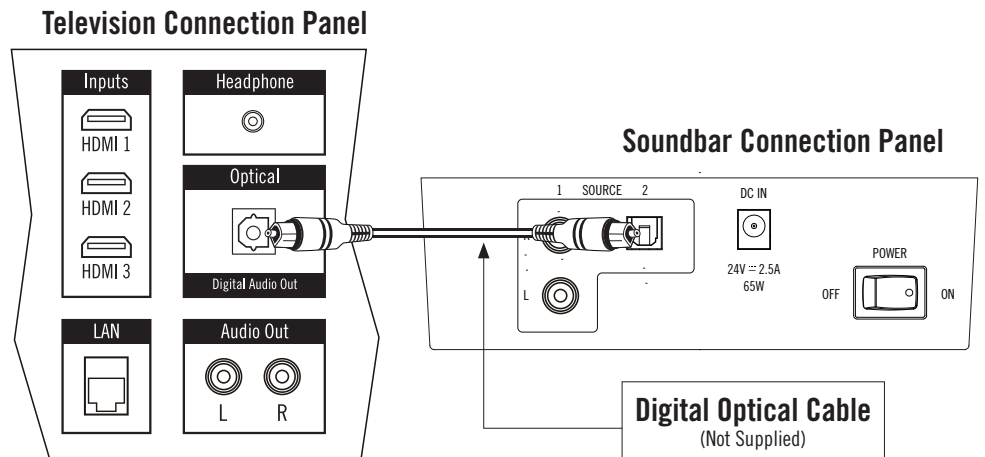


Quick Setup Guide - Connecting The KLIPSCH ICON™ SB 1

Step 1

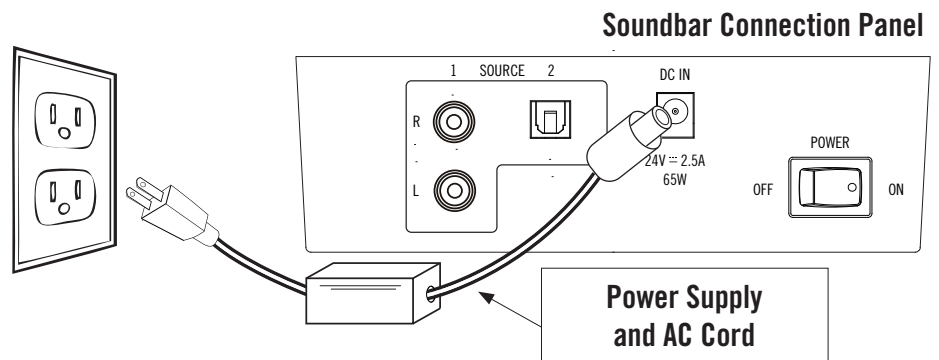
Once you have placed the KLIPSCH ICON™ SB 1 soundbar where you want it either below or above your TV, connect one end of an optical digital cable (not supplied) to your TV's optical digital audio output jack and connect the other end of the cable into the optical input jack on the rear of the soundbar.

NOTE: THE SOURCE BUTTON ON THE SOUNDBAR SWITCHES INPUTS BACK AND FORTH FROM OPTICAL TO L/R RCA.



Step 2

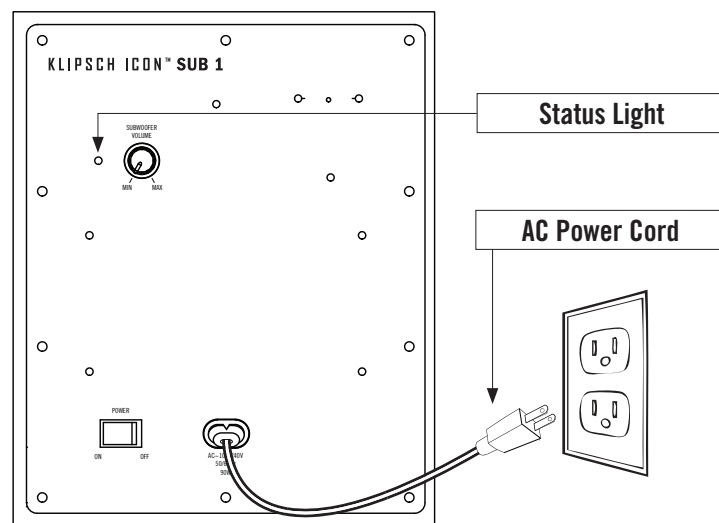
Next, plug the AC power cord into the soundbar power supply, then connect the power supply into the DC Input on the rear of the soundbar. Plug the AC power supply into a "live" electrical outlet and turn the soundbar's Main Power switch on the rear of the soundbar to "On". On the front of the soundbar, make sure the left status light is either solid green or orange (press any button once if light is steady red).



Step 3

Last, after placing the KLIPSCH ICON™ SB 1 subwoofer where you want it in the room, take the subwoofer AC power cord and plug one end into the "AC Input" on the back of the subwoofer and the other end into a nearby "live" power outlet. Turn the subwoofer Main Power switch on the back of the subwoofer to "On". The red light will turn on until it finds the wireless signal coming from the soundbar. Once it finds that signal (approximately 15 seconds), the solid red light will change to solid blue, indicating the subwoofer is now connected to the soundbar. Your KLIPSCH ICON™ SB 1 system is now ready to operate!

Subwoofer Rear Connection Panel



(For more information, refer to the owner's manual)